

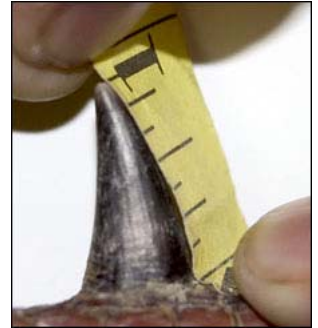
How to Score Your Wild Turkey

You can calculate the score of your turkey with our [scoring calculator](#).

Before you begin to score your turkey, be sure to note that all measurements are taken in 1/16-inch increments and converted to decimal form. A current NWTF member or another licensed hunter from the state where the bird was harvested must verify all measurements.

Step 1: Weigh your bird in pounds and ounces and convert ounces to decimal form. [Click here](#) for conversion chart.

Step 2: Measure each spur. Spurs must be measured along the outside center, from the point at which the spur protrudes from the scaled leg skin to the tip of the spur. Add both spur measurements and multiply the combined length of the spurs by 10. This is the number of points you receive for the turkey's spurs.



Step 3: Measure the beard length (a beard must be measured from the center point of the protrusion of the skin to the tip) and convert it to decimal form. [Click here](#) for conversion chart.

Next, multiply the beard length figure by 2; this is the number of points you receive for the beard length. If you have an atypical bird (multiple beards), measure each beard, convert them to a decimal number, then add those figures together and multiply by two. This is the number of points you receive for your turkey's beards.



Step 4: Add together the weight, the points for spurs and points for beard(s): This is the score you receive for your turkey.

Conversion Chart

1/8 Measurements	1/16 Measurements	Weight
1/8 = .1250	1/16 = .0625	1 OZ. = .0625
2/8 = .2500	2/16 = .1250	2 OZ. = .1250
3/8 = .3750	3/16 = .1875	3 OZ. = .1875
4/8 = .5000	4/16 = .2500	4 OZ. = .2500
5/8 = .6250	5/16 = .3125	5 OZ. = .3125
6/8 = .7500	6/16 = .3750	6 OZ. = .3750
7/8 = .8750	7/16 = .4375	7 OZ. = .4375
	8/16 = .5000	8 OZ. = .5000
	9/16 = .5625	9 OZ. = .5625
	10/16 = .6250	10 OZ. = .6250
	11/16 = .6875	11 OZ. = .6875
	12/16 = .7500	12 OZ. = .7500
	13/16 = .8125	13 OZ. = .8125
	14/16 = .8750	14 OZ. = .8750
	15/16 = .9375	15 OZ. = .9375